

## FFW-37 Honors Family-Friendly Employers

A new initiative launching this summer will recognize and encourage family-friendly workplaces in Phelps County.

The FFW-37 Family Friendly Workplace program, "Where Families and Businesses Thrive," was created through a partnership between the Holdrege Area Early Childhood Partnership (HAACP), the Holdrege Area Chamber of Commerce and PCDC.

McKenna Fahrenbruch, HAACP Executive Director, said the program was developed as the three organizations "share a common belief that our missions align in supporting the businesses, families, and overall growth of Phelps County."

The initiative will recognize businesses that already foster family-friendly environments while encouraging others to adopt policies and practices to support employees and their families.

"A family-friendly workplace in Phelps County is one that supports employees and their families through policies such as employee assistance programs, paid family leave, and predictable scheduling practices that help families thrive within our community," Fahrenbruch said.

Businesses can become a certified Family Friendly Workplace

continued on page 2



#GONEWS  
#GROW37

## Seventeen Students Awarded High Demand Jobs Scholarships

Seventeen students will receive a share of \$35,000 in scholarships to pursue future careers in Phelps County.

The high-demand jobs scholarships are part of the Phelps County Development Corporation's efforts to create a quality local workforce. The students will return to Phelps County after graduation to work. This year, scholarships ranged from \$1,000-\$5,000 each. The recipients were chosen from a record pool of 29 applicants.

Grady Ganser graduated from

Holdrege High School this year, and he plans to attend Central Community College in Hastings to study automotive technology. He received a \$3,000 high-demand jobs scholarship to help pay for his education.

Ganser said his interest in this field was first sparked by helping his parents, Justin and Traci Ganser, fix their cars.

He then enrolled in CCC's Janssen Auto Tech class in high school. PCDC is a funding partner in this program designed to

encourage careers in this high-demand field.

Ganser said he enjoyed the class and learned a lot, and he completed the entire two-year program.

He is looking forward to attending CCC in the fall and then seeking "a good stable job" after graduation, with his goal being to someday open his own repair shop.

He enjoyed growing up in Holdrege, and he sees it as a good

continued on page 4

## 2026 Phelps County High Demand Jobs Scholarship Recipients



Addison Andersen



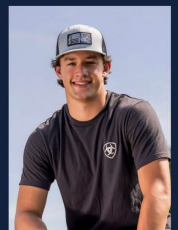
Aldyn Hadley



Alyssia Kruger



Angela Young



Chase Brinkman



Clay Maloley



David Yepez Morales



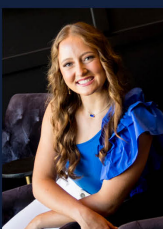
Ellie Pelster



Grady Ganser



Jett Johnson



Keeley Vaughn



Kinsey Lauby



McCartney Elliott



Sydney Harris



Tea Kroese



Tegan Weaver



Zane Veal



**Phelps County Business Journal**

Published quarterly and distributed to all businesses and residential addresses in Phelps County plus decision makers and leaders throughout the state and nation.

**Executive Director**

Jeff Hofaker  
Jeff@PhelpsCountyNe.com

**Director of Business Services**

Sally Sadd  
Sally@PhelpsCountyNe.com

**Director of Administrative Services**

Stacy Pafford  
Stacy@PhelpsCountyNe.com

**PCBJ Designer/Writer/Editor**

Kristine Jacobson  
Send news releases,  
news tips and story ideas to  
kjacobson@krjpr.com

**PCDC Officers**

Jared Engelbert - President  
Nate DeWald - Vice President  
Grant Hinze - Secretary/Treasurer

**Board of Directors**

Janet Boehler  
Grant Ericksen  
Phil Hinrichs  
Tye Marquardt  
Reed McClymont  
Chris McQuillan  
Jeff Moon  
Doug Stevenson  
Shane Westcott

**PCDC Offices**

502 East Avenue, Suite 201  
PO Box 522  
Holdrege, NE 68949-0522  
ph (308) 995-4148  
fax (308) 995-4158  
www.PhelpsCountyNe.com

# PCDC Staff Build Connections That Create PC Opportunities

This spring, PCDC staff attended numerous state, regional and national conferences, workshops and meetings focused on housing, workforce development, childcare, entrepreneurship and business attraction. While



**Jeff Hofaker**

these events require time away from the office, they play an important role in bringing new ideas, resources and opportunities back to Phelps County.

PCDC Executive Director Jeff Hofaker participated in the Six Regions, One Nebraska workshop, where leaders from 24 counties shared strategies for addressing

workforce, childcare and housing challenges. Partnerships developed through this initiative have allowed local childcare providers to gain access to mentoring, grants and advocacy resources.

Hofaker also represented rural Nebraska during the National Rural Economic Development Association's Washington, D.C., Fly-In in late April. He met directly with federal agency leaders, members of Congress and economic development organizations to advocate for policies and programs that support rural communities.

"It was a privilege and honor to be asked to be on this committee for NREDA," Hofaker said. "This committee focuses on monitoring and influencing federal legislation that can

impact economic development in rural America. The 2026 DC Fly-in was a success in relationship building, rural policy positioning, and encouraging multi-group advocacy for our rural communities."

Business attraction was another focus this spring. At the Community Venture Network meeting in Minneapolis, Hofaker met with representatives from 15 companies that are exploring expansion opportunities. Each conversation provided an opportunity to showcase Phelps County's workforce, infrastructure, available properties and business development programs.

PCDC, as part of its membership with CVN, has the opportunity to attend CVN events three times a year.

Housing also remained a key priority. Through the Nebraska Investment Finance Authority Housing Innovation Conference, Hofaker connected with developers, lenders, contractors and state officials while learning about new housing tools and programs that could benefit local communities.

PCDC Director of Business Services Sally Sadd attended the Connecting Entrepreneurial Communities Conference in Tekamah in April and served on the planning committee for the Nebraska Economic Developers Association conference in Kearney in early June.

Sadd and PCDC Director of Administrative Services Stacy Pafford also attended the MarkeTech Conference in Kearney in March, where they promoted PCDC GO! HOME and GO! BUSINESS programs to marketing professionals, entrepreneurs and business leaders.

## Family-Friendly Workplaces .....

**continued from page 1**

by completing an application, providing two employee references and submitting documentation demonstrating family-friendly workplace practices.

Program requirements will vary based on business size, and a special certification option has been created for small businesses.

HAACP will oversee the childcare component of the program, HACC will focus on business engagement and community involvement, and PCDC will support the initiative through its economic development efforts.

The program is modeled after a successful

initiative in Lincoln but has been adapted to Phelps County. Local organizers emphasized the importance of including small businesses, which play a vital role in the local economy.

The goal is to certify 50 businesses throughout Phelps County during the program's first year.

Certified workplaces will receive a certificate and a window cling to display at their business, along with recognition on the program website and social media platforms. A small application fee will be required to participate.

PCDC Executive Director Jeff Hofaker said the program will help retain current families, attract new residents and strengthen the local workforce.



## THRIVING WHERE THEY STARTED SERIES

# Choosing Holdrege for Family & Future

For Joseph and Jaimee Anderson, returning to Holdrege wasn't part of the original plan. Like many young adults, they left their hometown to pursue education, careers and new experiences.

They returned for what was supposed to be a temporary stay when Jaimee's dad was diagnosed with cancer. But during that time, they discovered that Holdrege offered exactly the kind of life they wanted.

Today, both are thriving professionally while helping shape the future of their hometown.

Joseph graduated from Holdrege High School in 2015 and enlisted in the US Army as a tank crewman. He rose to the rank of sergeant before receiving an honorable discharge. After returning to civilian

life, he attended the University of Nebraska at Kearney and then transferred to Nebraska Wesleyan University, where he earned an accounting degree.

While attending Nebraska Wesleyan, Joseph completed an accounting internship with General Dynamics. After returning to Holdrege, he joined Phelps Memorial Health Center, where he has worked in accounting for more than three years.

"One thing I enjoy most is knowing the work I do helps support an organization that serves our community every day," Joseph said.

Jaimee, a 2013 HHS graduate, pursued a Bachelor of Science degree in Organizational and Relational Communications with a business emphasis at the University of Nebraska at Kearney. Following graduation, she worked at The Buckle as a product developer and then moved to Lincoln to work as an operations manager with Ellyne Bridal. After returning to Holdrege, Jaimee joined Adjacent Properties and now serves as Director of Operations for Adjacent Entertainment and Aligned Foundation.

She has played a role in expanding the Holdrege Sun Theater and Event Venue and initiating the Thrive Childcare Center.

"This position has connected me to the community in a million ways," Jaimee said. "I am grateful every day!"

Although both enjoyed growing up in Holdrege, neither expected to return permanently.

Their plans changed when Jaimee's father was diagnosed with cancer. They wanted to be close to help on the farm so he could recover. But

as they settled back into the community, their perspective shifted.

"Having a child and experiencing Holdrege through an adult lens really helped solidify how amazing the area is for families," Jaimee said. "We have gained a real appreciation and admiration for the entrepreneurs, organizations and families that make Holdrege so wonderful."

They are now raising two boys, and most of their family also lives in the area.

### Supportive Community

Both credit Holdrege's supportive environment for helping shape who they are today.

For Joseph, the community's encouragement became evident while serving in the military.

"During basic training and a deployment, I received strong support from my community through letters and care packages," he said. "Holdrege is a close-knit community where people take care of each other."

Jaimee recalls growing up surrounded by opportunities and encouragement.

"I have always been a busy body, and I enjoy being involved across multiple organizations and activities," she said. "I have always enjoyed the encouragement to be involved and try everything growing up. I think the vast community support for kids here is paramount to future success. We have wonderful educators, business owners and mentors in Phelps County who help kids feel like the sky is the limit."

One mentor who made a lasting impact on Joseph was longtime tennis coach Ray Ruybalid.

"Ray was always supportive, not just in an athletic sense, but in wanting you to become the best version of yourself," Joseph said. "He helped me recognize that the level of support I received here compared to other places I've lived was unmatched. That experience made me realize I wanted my sons to grow up in a community with that same kind of support."

### Helping the Community Thrive

Today, the Andersons enjoy seeing Holdrege



**Jaimee & Joseph Anderson**

continue to evolve while maintaining its small-town character.

"We love that Holdrege has stayed rooted in small-town values while continuing to create opportunities for young families," Jaimee said.

They point to local entrepreneurs, restaurants, coffee shops and community amenities as examples of the city's growth. Some of their favorite places are North Park and Veterans Park, where they enjoy spending time outdoors with their children.

Equally important is the quality of life they have found through local employers that value family and work-life balance.

The Andersons have also become more involved in shaping Holdrege's future.

Jaimee serves on the Board of Directors for the Iron Horse Arts District and contributes to planning efforts for events such as Haunted Holdrege and the Art After Dark gala. She is also active in Rotary. Through these roles, she has helped create memorable events and experiences that strengthen community connections and enhance quality of life.

Joseph also volunteers with Iron Horse Arts District and is passionate about supporting veterans and promoting mental health.

Together, they believe Holdrege offers tremendous opportunities for young people.

"The opportunities here are limitless, and I only see room for more entrepreneurs and change makers in Holdrege," Jaimee said.



Scan to read entire story.

# Mahundis Launch TruHaven In-Home Care

Alex and Kadi Mahundi have launched TruHaven In-Home Care, a locally owned and operated home care agency dedicated to helping seniors live safely, independently, and with dignity in the comfort of their own homes.

“TruHaven was founded on the belief that every person deserves to be treated with dignity, respect, and genuine compassion,” Alex said. “We are honored to serve seniors and their families by providing care that builds trust, meaningful relationships, and peace of mind.”

For the past year, Alex worked with another in-home care agency before deciding to launch TruHaven, which is based on the values of Trust, Relationships and Understanding. TruHaven is located in downtown Holdrege at 511 West Ave.

Alex brings more than 16 years of leadership experience in nonprofit management, workforce development, business operations, and community engagement. He served as an Executive Pastor and Community Outreach leader at Trinity Church for more than eight years. He is currently finishing an MBA in health-care administration at Fort Hays State University and has spent much of his career creating programs and organizations that help people thrive, including Axios Talent and Workforce Development, which he also still leads.

Kadi brings experience in family services, caregiving, childcare, and administration. She holds a bachelor’s degree in Family Studies with



Kadi & Alex Mahundi

a minor in biology from the University of Nebraska at Kearney. Her professional background includes social work, caring for seniors as a caregiver and Certified Nursing Assistant (CNA), operating a licensed in-home daycare for seven years, and serving in church administration and bookkeeping. Throughout her career, Kadi has been known for her compassion, dedication, and genuine heart for helping people.

TruHaven In-Home Care will provide non-medical in-home care services, including

personal care, companionship, homemaking, respite care, transportation assistance, post-hospital support, and individualized care plans tailored to each client’s unique needs. It will serve communities throughout South-Central Nebraska and is committed to becoming a trusted resource for seniors, families, healthcare professionals, and community partners.

The Mahundis are especially excited about creating meaningful employment opportunities for caregivers.

“Our vision is simple,” Kadi said. “We want every client and family to know they have a trusted partner who genuinely cares. We are committed to providing exceptional care that allows seniors to remain independent, comfortable, and connected to the people and communities they love.”

TruHaven officially launched in early June with five caregivers on staff. They will continue to add caregivers as needed.

PCDC helped Tru Haven launch with a gap-financing loan and digital improvement grant.

“I am grateful to PCDC and local business and community leaders, including 4West Marketing and Bergman Ag,” Alex said. “I’m so thankful for their support and mentorship throughout this entire process of starting a new business.”

Contact TruHaven at 308-999-5201 or alex@truhavencares.com or visit the website at truhavencares.com for more information.

## High-Demand Jobs Scholarships ....

continued from page 1

future home.

“I’ve enjoyed living in Holdrege the entire time,” Ganser said. “It’s a small town, and it’s close to bigger towns like Kearney. I like the size of Holdrege, and I like the people in Holdrege.”

Scholarship winners sign a contract stating their intention to return to Phelps County to work after their education. The scholarships are funded through LB840 sales tax funds, private donors and matching funds from the Phelps County Community Foundation.

The scholarships are intended to encourage students to pursue work in local high-demand jobs: nurses, agri-business and technology positions, diesel mechanics, engineer technologists, mechatronics engineers, injection mold technicians, electro-mechanical technologists, machinists, tool and die makers, construction trades, welders and teachers.

The 2026 recipients are:

- Addison Andersen, 2026 Bertrand High School, Nutrition and Health Sciences, UNL, \$1,000
- Aldyn Hadley, 2026 Holdrege High School, Agribusiness, Southeast Community College Beatrice, \$3,000
- Alyssia Kruger, 2026 Holdrege High School, Nursing, Central Community College Kearney, \$3,000
- Angela Young, Non-Traditional, Nursing, UNK, \$3,000
- Chase Brinkman, 2025 Holdrege High School, Utility Line, Northeast Community College, \$3,000
- Clay Maloley, 2026 Holdrege High School, Animal Science, Fort Hays State University, \$1,000
- David Yopez Morales, 2026 Holdrege High School, Electrician, Southeast Community College Milford, \$5,000
- Elizabeth Pelster, 2026 Holdrege High School, UNL, Nutrition/Exercise and Health Sciences, \$1,000

- Grady Ganser, 2026 Holdrege High School, Automotive Technology, CCC Hastings, \$3,000
- Jett Johnson, 2026 Holdrege High School, Northeast Community College, Precision Ag, \$1,000
- Keeley Vaughn, 2025 Holdrege High School, Diagnostic Medical Sonography, Bryan LGH College of Health, \$1,000
- Kinsey Lauby, 2026 Loomis High School, Nursing, Wayne State College, \$3,000
- McCartney Elliott, 2022 Holdrege High School, Pharmacy, UNK, \$1,000
- Sydney Harris, 2025 Loomis High School, Exercise Science with a minor in Healthcare Management, UNK, \$1,000
- Tea Kroese, 2023 Holdrege High School, Early Childhood Inclusive, UNK, \$2,000
- Tegan Weaver, 2026 Holdrege High School, Collision/Refinishing Technology, Other, \$1,000
- Zane Veal, 2024 Holdrege High School, Education, UNK, \$2,000

ENTREPRENEUR SPOTLIGHT

# Cables Cultivate Growth in Phelps County

From providing locally raised beef through Cross Diamond Meats to revitalizing the Bertrand Farmer's Market, Meredith Cable and her husband, Corey, have invested in ventures that strengthen connections and bring vitality to Phelps County.

Meredith grew up near St. Edward on a cow-calf, feedlot and row crop operation and started on an agricultural career path. After working for several respected agricultural companies, Cable found herself drawn into entrepreneurship. She said her husband, Corey, who is the Ranch Manager at Cross Diamond Cattle in rural Bertrand, is the real entrepreneur.

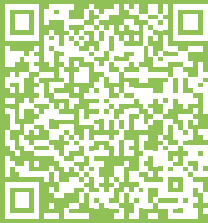
"I've just been blessed to be along for the ride and have the opportunity to do it with him," she said.

The Cables are involved in multiple ventures, including Cross Diamond Meats, Cable Car Wash, storage units in Bertrand, and the revitalized Bertrand Farmer's Market. Meredith also has dreams of opening a mercantile featuring locally made goods, produce and artisan products.

Their entrepreneurial journey began with a simple idea: connecting consumers to local beef.

Meredith and Corey started selling bulk beef to friends in the Omaha area in 2018. In 2021, they officially launched Cross Diamond Meats in partnership with Cross Diamond Cattle owners Scott and Kim Ford.

What began as bulk beef sales has grown into a multifaceted business offering bulk beef, retail beef, freezer meals, tallow products, and now a food truck. While many customers remain in the Omaha area, the company now serves customers in central and western Nebraska and even ships beef to customers in Chicago.



SCAN code to read entire story.

BERTRAND FARMER'S MARKET: Tuesdays, 5:30-7 p.m. Bertrand City Park



Corey & Meredith Cable Family

She credits much of their success to the relationships they've built along the way, particularly with the Ford family and the team at Lost Way Brewery. Those relationships have also strengthened the Cables' commitment to Bertrand.

Although both Meredith and Corey are transplants to the area, they quickly recognized the importance of investing in the community they now call home.

That commitment led Meredith to revive the Bertrand Farmer's Market after it had been dormant for several years. What began as a small gathering of four or five vendors has grown significantly.

Now in its second year under her leadership, the market recently welcomed 17 vendors and continues to expand with plans for food trucks,

special events and family-focused activities. It takes place at the Bertrand City Park on Tuesdays throughout the summer from 5:30-7 p.m.

Looking ahead, Cable is excited about the possibility of hosting a farm-to-table dinner that would showcase local agriculture and local businesses. The event would bring together ranchers, food producers, artisans and entrepreneurs while helping consumers learn more about where their food comes from.

Recently, Meredith met with PCDC staff to discuss their businesses and future goals.

"Our meeting with PCDC helped us look at our current businesses under a different lens," Cable said. "They helped us see where we could make changes, where we could make improvements, and where we could grow," she said.

## Holdrege Hits Home Run With New Baseball/Softball Complex



Scan to read entire story.

The City of Holdrege completed work on its new baseball/softball complex this spring. Construction on the four-field complex in northwest Holdrege began in 2018. The final price tag is just under \$3.7 million. PCDC is contributing \$75,000 a year toward the project for 15 years for a total of \$1.125 million from LB840 sales tax funds.

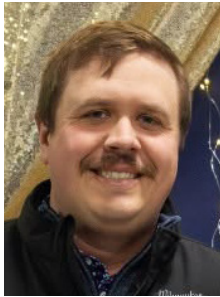
The new complex includes four fields, modern restrooms, a spacious concession stand, and Wi-Fi. The layout allows for multiple games and practices at the same time, reducing scheduling conflicts and creating more opportunities for youth participation. For the full story on how the community has already benefited from the new complex, scan the QR code above or visit [phelpscountyne.com/inthenews](http://phelpscountyne.com/inthenews) (May newsletter).



## Mingus Plumbing Fills Critical Workforce Need

As Phelps County continues to grow, so does the demand for skilled trade professionals. Ryan Mingus is helping meet that need through Ryan Mingus Plumbing, LLC, a locally owned business that opened in 2023.

Mingus began his plumbing career in 2013 as an apprentice with a Kearney



**Ryan Mingus**

plumbing company. After four years of apprenticeship training, he earned his Journeyman Plumber license and spent the next six years honing his skills in the trade. Ready to take the next step, he obtained his

Master Plumber license and officially opened his own business.

The decision to become a business owner was encouraged by the many contractors Ryan worked alongside throughout his career.

“I was inspired to start my business after getting encouragement from multiple contractors that I had worked with throughout my career,” Mingus said. “They were impressed with my work and thought that I would thrive with a company of my own.”

Ryan and his wife, Megan, moved to Holdrege two years ago so she could help her father with his business, Spady Auto Sales. The move also presented an opportunity for Ryan to expand his plumbing services into an area with a growing need for licensed plumbers.

Today, Ryan Mingus Plumbing LLC provides new residential construction plumbing as well as residential and commercial service work. Based in Holdrege, the business serves customers throughout the surrounding region.

Originally from Ravenna, Ryan and Megan are raising their two children in Holdrege: 4-year-old Paeson and 13-month-old Ella.

Mingus can be reached by phone or text at 308-380-9164, by email at rmingusplumbing@gmail.com, or through the Ryan Mingus Plumbing Facebook page.

## Pink Pony Nails Gallops into Holdrege

Pink Pony Nails opened at 612 W. 4th Ave. in mid-May in Holdrege.

Owner and nail technician Jessica Nash said she is focused on providing high-quality nail services in a fun, welcoming, and relaxing environment.



**Jessica Nash**

“My goal is to help every client leave feeling confident, pampered, and beautiful,” she said. Nash previously worked as a CNA at Phelps Memorial Health Center and still helps there when needed. She recently earned her Nebraska Nail Technician License and is excited to bring her passion for nails and beauty to Holdrege. She offers gel manicures, Gel-X,

builder gel, acrylic nails, pedicures, nail art, and nail maintenance services.

Before starting Pink Pony Nails, Nash visited with PCDC staff and gained valuable guidance and resources during the startup process.

“Their support helped me better understand business planning and gave me confidence as I worked toward opening Pink Pony Nails,” she said.

She chose the name Pink Pony Nails as a reflection of her fun and creative personality.

“I wanted something memorable, playful, and unique that would make people smile while also representing a welcoming and positive atmosphere,” she said.

Her hours vary to accommodate clients’ schedules, including daytime and evening appointments. Find out more at Pink Pony Nails on Facebook or by calling Nash at (308) 991-9303.

## Lamon Joins Home Federal Bank

Marc S. Lamon has joined Home Federal Bank as the Western Market President, specializing in ag and commercial business development. Lamon brings 20 plus years of experience in the banking industry.



**Marc Lamon**

Lamon’s professional focus centers on cultivating and managing client relationships. This includes a comprehensive understanding of financial operations, marketing strategies, and budgetary oversight. Lamon has demonstrated expertise in analyzing creditworthiness and structuring financial

solutions tailored to meet both client and institutional needs.

Lamon attended Custer County District High School (1990) in Montana and graduated from Dickinson State University (ND) in 1994. Additionally, Lamon is an alumnus of the Graduate School of Banking UW-Madison in 2014.

Lamon has lived in Holdrege since 2014 with his wife, Shannon. They have two grown sons who both graduated from Holdrege High School and currently live in Kearney. When he’s not working, Lamon enjoys family activities, home improvement, outdoor recreation and riding his Harley.

Lamon can be reached at Home Federal’s

Holdrege or Lexington Branches at (308) 398-4981 or by email at mlamon@homefederalne.com.

## New Agent at Heritage Agency

Christopher James is a new sales agent for Heritage Agency Real Estate.

James is a Loomis resident and began his new position in May after previously working at Holdrege Irrigation.



**Christopher James**

“I enjoy conversing with people of different backgrounds and experiences,” James said. “Everyone has their reasons to buy a home and even more so, their own specific reason why ‘that’ home is the one for them.”

James said he appreciates that people in Phelps County “tend to mean what they say and genuinely look out for one another. After spending years in a larger, faster-paced environment, I found myself drawn to the authenticity, strong relationships, and sense of community that make this area special.”

James is originally from Topeka, Kan. He earned a bachelor’s degree in psychology with a minor in biology. He is involved with the Phelps County Ambassadors and enjoys reading, fishing and teaching his children. He and his wife, Lanessa, have two daughters.



# Creative Businesses Thriving Downtown

## New Art Gallery Among Four New Creative Spaces

The Iron Horse Arts District opened its new Art Gallery on June 11 with a ribbon-cutting and grand-opening event featuring the art of former HHS art teacher Christy Kosmicki.

The gallery is located in the First State Bank community room, 401 East Ave. The bank donated the space to the district, along with office space in the former investment center.

“The collaboration with First State Bank and Iron Horse has been amazing,” Iron Horse board president Rebecca Anderson said. “It is accessible for more people to enjoy and view art, and it is helping us create a more vibrant downtown.”

The Iron Horse Arts District became a certified district with the Nebraska Arts Council in 2024 and since then has hosted monthly pop-up art galleries at various downtown locations, commissioned a mural, organized festoon lighting and community crosswalk mural painting projects and hosted events, such as the Artisan Expo and Flyover Country Stage, Haunted Holdrege, Art After Dark and photography and mini mural showcases.

PCDC representatives served on the arts district steering committee, and PCDC has provided grant support as one of the district’s goals is to make downtown grow and thrive through the arts, and that is already happening as many creative businesses are opening in the district.

### Serenity Studios

Ashley Brock, HHS choir and band teacher, reopened Serenity Studios in a new downtown Holdrege location at 713 4th Ave. in May.

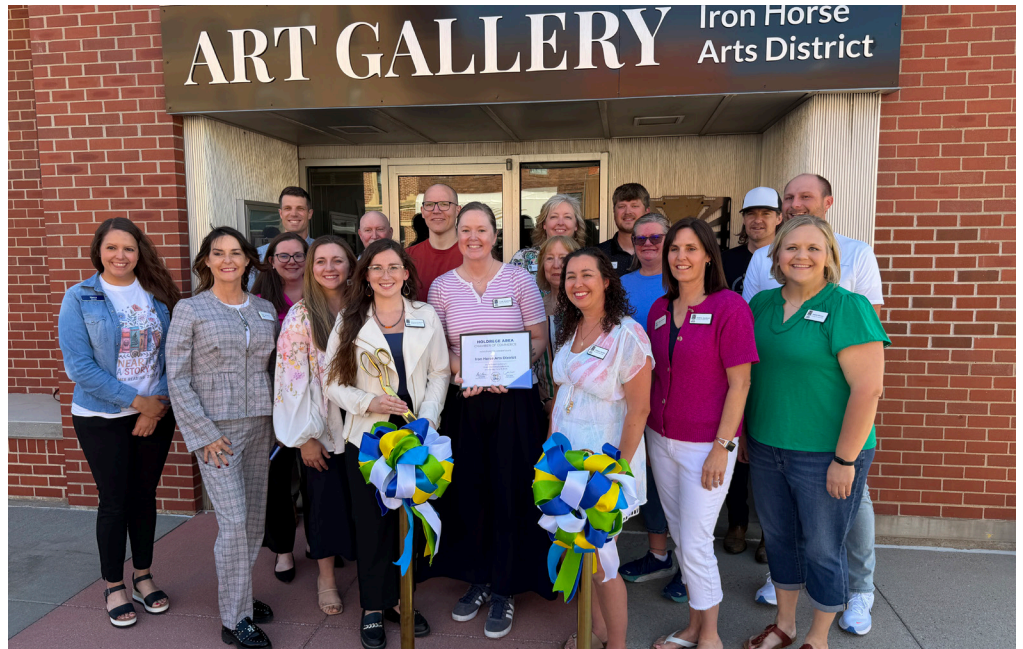
“Serenity Studios provides an opportunity for me to connect with more people in our community, create additional support for the Iron Horse Arts District, and most importantly, share my love of music with more students,” she said.



**Ashley Brock**

Holdrege has a vibrant musical history, and she wants to contribute to that legacy.

“By reopening my studio, I hope many will be able to learn about how special music is and how it truly makes a difference,” she said.



**Board members of the Iron Horse Arts District and Holdrege Area Chamber of Commerce celebrate the grand opening of the Iron Horse Arts District gallery at First State Bank, 401 East Ave.**

This summer, she is offering individual piano, instrumental and vocal coaching lessons. Fall registrations will begin soon and will include individual piano lessons and instrumental lessons, individual and group vocal coaching, intro to guitar class, adult piano lessons and community choir.

Looking ahead to 2027, Brock will offer audition and musical theater workshops, show choir summer camps, vocal development workshops, and care home outreach programs.

Brock is also planning to remodel her space and has some exciting plans for the lower level.

For more information, follow Serenity Studios on Facebook and Instagram or email Ashley at serenitystudiomusicians@gmail.com.

### Kimberly Powers Photography



**Kimberly Powers**

Kimberly Powers Photography recently moved from her previous location on west Fourth Avenue to 716 4th Ave.

“The location and space are ideal,” Powers said as she is more visible in a downtown location.

Her new space is also larger and provides more room to offer family sessions indoors. For senior photos, it also offers more space for sports-themed shots and space for

a style closet for her senior girl customers.

Powers started her photography business in February 2022. She specializes in senior and family portraits and sports photography.

A new service she recently started offering is branding sessions for businesses and “Headshot Happy Hours.”

Visit [kimberlypowersphotography.com](http://kimberlypowersphotography.com) for more information or call (308) 991-8707.

### Creative Wellness Room

Candance Nichols, owner of CK Counseling (609 4th Ave.), opened the Creative Wellness Room in December as an extension to her counseling services to provide a space for hobbies, self-care, family time and friend time.

“Studies have proven that art is a powerful tool to lowering stress, providing an outlet for complex emotions, and building emotional resilience,” Nichols said. “In addition to being good for mental health, it also helps build connections for people. Our classes help you meet new people and build stronger relationships.”

Classes are open to anyone, not just those seeking counseling. She offers several classes each week, such as pottery or painting wooden flags, door mats or door hangers, or crushed resin projects. Reservations (\$40) are needed.

For more information, visit Creative Wellness Room on Facebook, Instagram or TikTok or call Nichols at (308) 991-3123.



Post Office Box 522  
Holdrege, NE 68949

**OR CURRENT RESIDENT**

**PHELPS COUNTY  
BUSINESS JOURNAL**

Business and Economic  
Development NEWS in  
Phelps County and  
Central Nebraska

# INSIDE

- 1. HDJ Scholarships
- 2. PCDC Staff News
- 3. Hometown Profiles
- 4. TruHaven Care
- 5. Entrepreneur Spotlight
- 6. New People in Business
- 7. Creative Businesses

Follow Us/Like Us



Visit Our Website

[www.phelpscountyne.com](http://www.phelpscountyne.com)

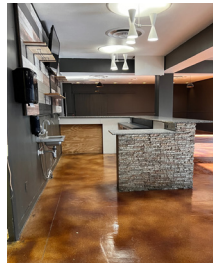


## BUSINESS OPPORTUNITY — THE DALE



Scan to view listings.

**DID YOU KNOW:** The PCDC website features available business properties for sale and lease. This edition, we are featuring space available in The Dale. Have you always dreamed of starting your own restaurant? Here's your chance! This spacious opportunity features 2,376 square feet of space in downtown Holdrege, right on Hwy 6 & 34 where thousands of cars pass by each day. It could be used for a restaurant or other purpose. Scan the QR code for more information. If you have a space available to lease or rent in Phelps County, contact PCDC about being listed on the sites and buildings listing.



## INVEST IN PHELPS COUNTY TODAY!



SCAN TO INVEST

PCDC is in the midst of its 5-year fundraising campaign to strengthen economic and community development across the county. The GROW37 Partnership aims to raise \$1.2 million in commitments to cover five years (2027-2031) of PCDC operating expenses. Both individual and business investors are needed to continually grow development opportunities in Phelps County. To invest, please scan the QR code to the left.

