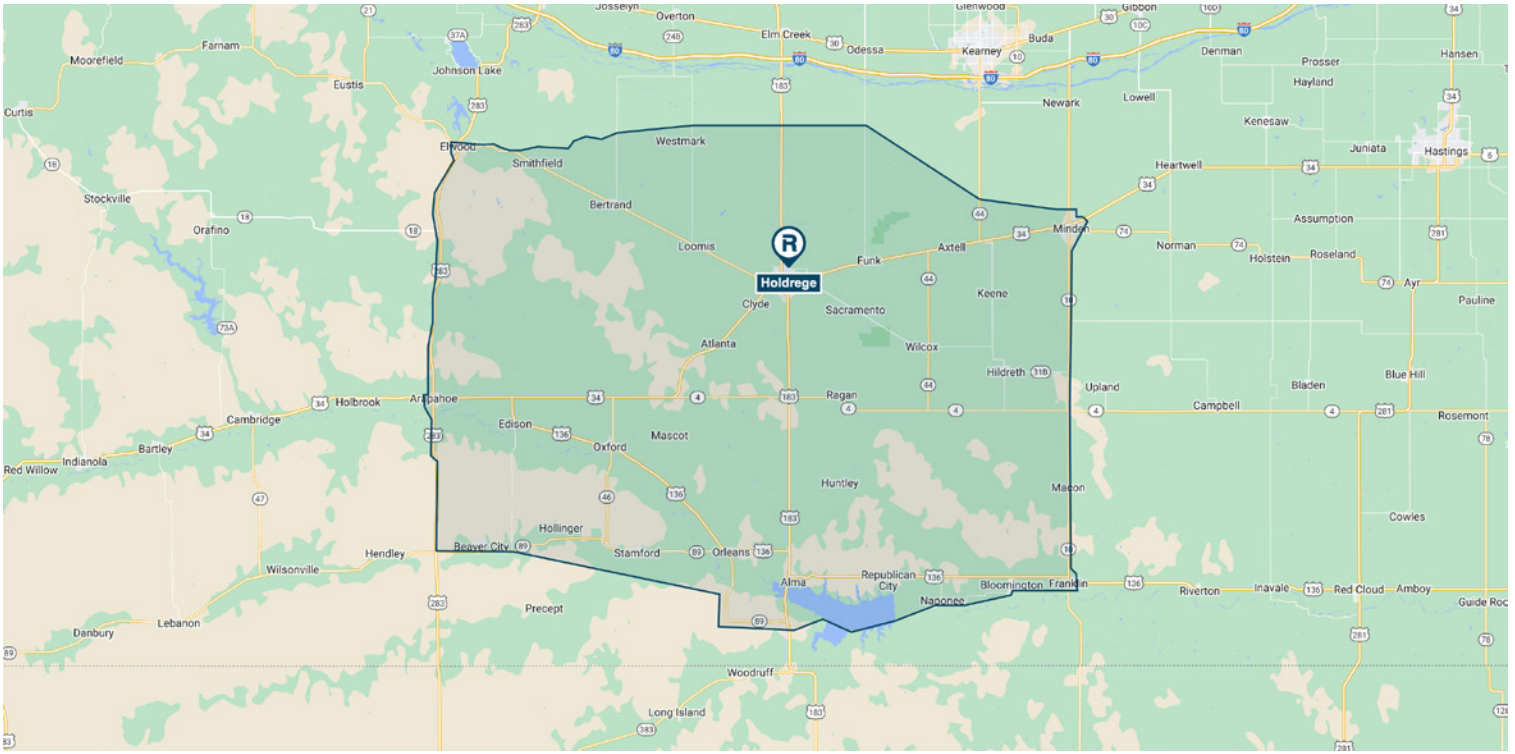


# Primary Retail Trade Area • Retail Market Profile

Holdrege, Phelps County, Nebraska



## Population

2023 21,532

## Educational Attainment (%)

Graduate or Professional Degree	6.27%
Bachelors Degree	17.23%
Associate Degree	13.76%
Some College	25.63%
High School Graduate (GED)	29.58%
Some High School, No Degree	4.99%
Less than 9th Grade	2.54%

## Income

Average HH	\$85,988
Median HH	\$64,712
Per Capita	\$36,961

## Age

0 - 9 Years	12.43%
10 - 17 Years	10.58%
18 - 24 Years	7.82%
25 - 34 Years	10.40%
35 - 44 Years	10.91%
45 - 54 Years	10.39%
55 - 64 Years	13.48%
65 and Older	23.99%
Median Age	43.02
Average Age	42.80

## Race Distribution (%)

White	91.79%
Black/African American	0.33%
American Indian/Alaskan	0.49%
Asian	0.36%
Native Hawaiian/Islander	0.05%
Other Race	2.31%
Two or More Races	4.67%
Hispanic	6.30%



### Ron Tillery

Phelps County Development Corporation  
Executive Director

502 East Avenue  
Suite 201  
Holdrege, Nebraska 68949

Phone 308.995.4148  
Cell 970.261.5151  
Ron@PhelpsCountyNE.com  
www.PhelpsCountyNE.com

### Aaron Farmer

The Retail Coach, LLC  
President

Office 662.844.2155  
Cell 662.231.0608  
AFarmer@theretailcoach.net  
www.TheRetailCoach.net



The information contained herein was obtained from sources believed to be reliable, however, The Retail Coach, LLC makes no guarantees, warranties or representations as to the completeness or accuracy thereof.

The presentation of this property is submitted subject to errors, omissions, changes of price or conditions, prior sale or lease or withdrawn without notice.

# Primary Retail Trade Area • Retail Market Profile

Holdrege, Phelps County, Nebraska

